

USIU-AFRICA OFF CAMPUS VPN CONNECTION MANUAL

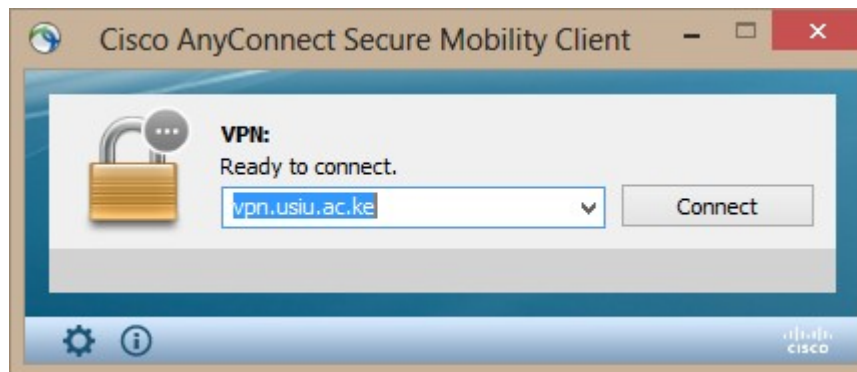
The client has to be manually started, this is to ensure that you have the greatest flexibility to decide where and when you want to use it.

1. How to start the VPN client

Click on the Microsoft logo Start icon bottom left of your screen then All Programs then Cisco Any Connect VPN Client for Windows XP and Windows 7. As for Windows 8 users search for the Cisco Any Connect. Alternatively for all Windows Users at the bottom right corner of the windows search for the Any Connect icon and click on it to open



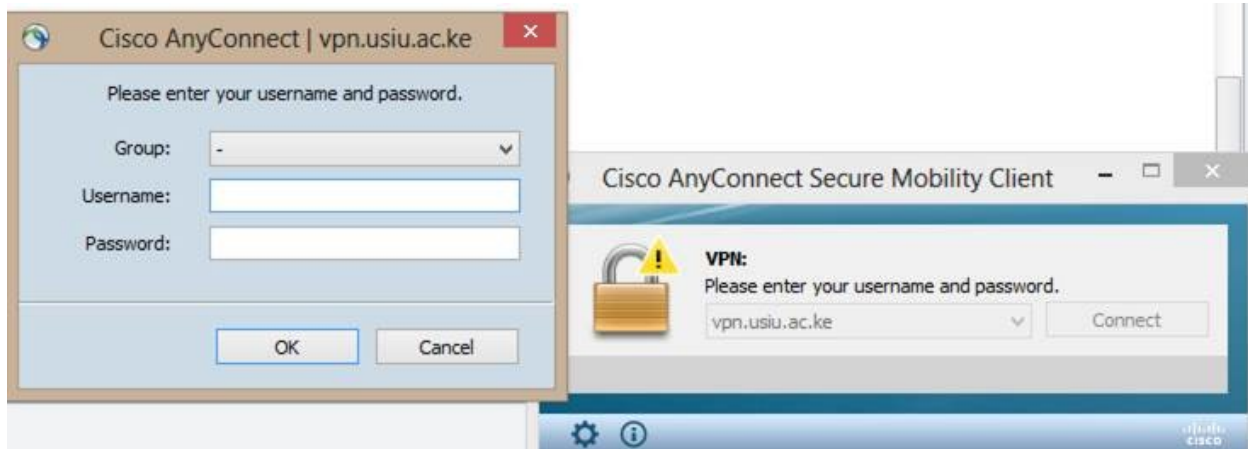
2. Connect. Remember to enter the server name as shown below (vpn.usiu.ac.ke)



Click Connect.

4. How to Enter your login Credentials

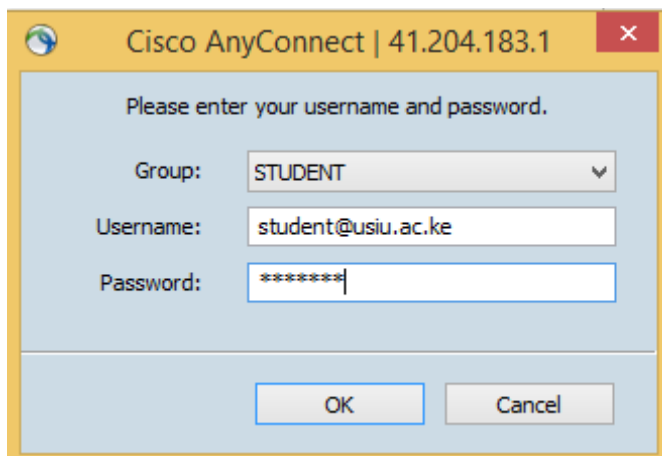
Select the Group STUDENT if you are a student.

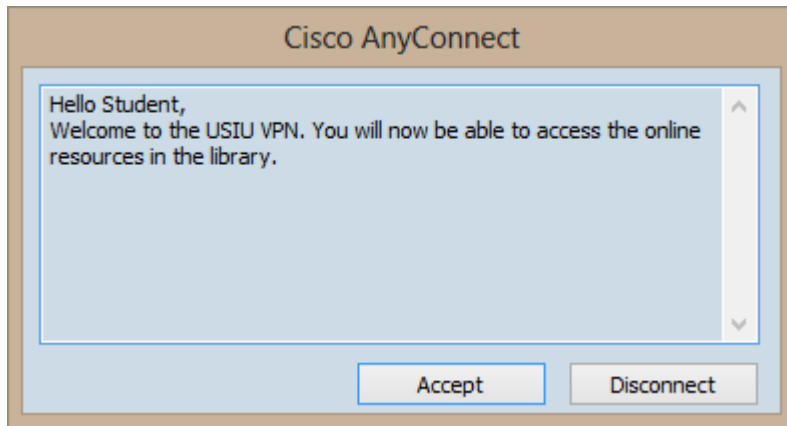


Enter your username and password.

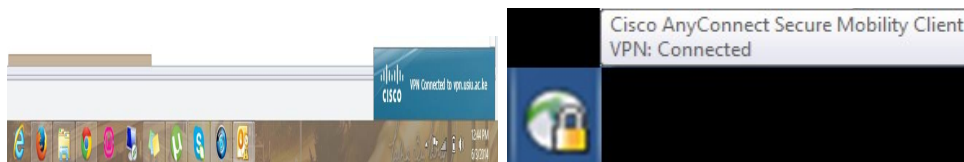
Please note since we moved to one username one password the username is similar to the one that is used to access resources like CX. Username should be yourusername@usiu.ac.ke .

It will take between 10 and 20 seconds to establish a connection to the USIU.AC.KE Network depending on the speed of your Internet link. Also during this time the client will ensure that it has the latest configuration.





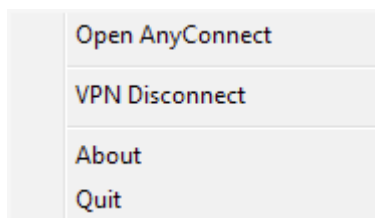
6. VPN is Connected



Once the connection has been made, the dialogue box will minimize to the System Tray. This is the area at the bottom right of your desktop where the clock is located. Hovering over this icon with your mouse pointer will display confirmation that the VPN (Virtual Private Network) link has been connected. All of your Internet traffic goes through the VPN to USIU.AC.KE. This ensures that you can access USIU Library resources such as journals and databases which could otherwise be restricted to on-campus use only. As such, please disconnect from the VPN when you do not need it and remember that when connected to the VPN you are bound by the University's IT Acceptable User Policies.

7. Disconnect from the VPN Client

To disconnect, right click the VPN icon in the System Tray and select Quit from the pop-up menu.



This will disconnect from the USIU VPN cleanly and exit the application. Connecting again is as simple as starting the application as before.

[Note that if you click the icon, the client window will re-open with a "Disconnect" button. If you click this it does disconnect, but the application still exists in the

System Tray, and you must still right-click and select "Quit" from the pop-up menu to close the application fully!]